

DRAWING NUMBER
51/146

GLENEAGLES PLAT THREE

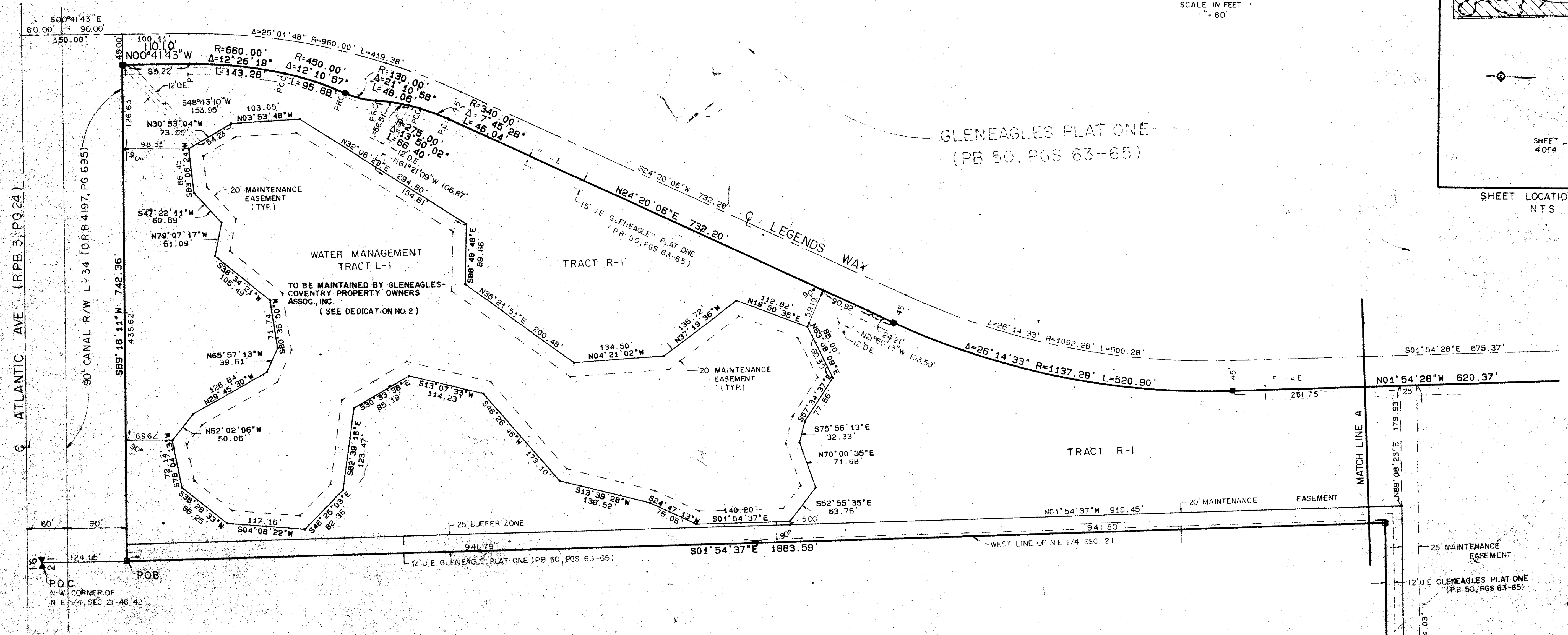
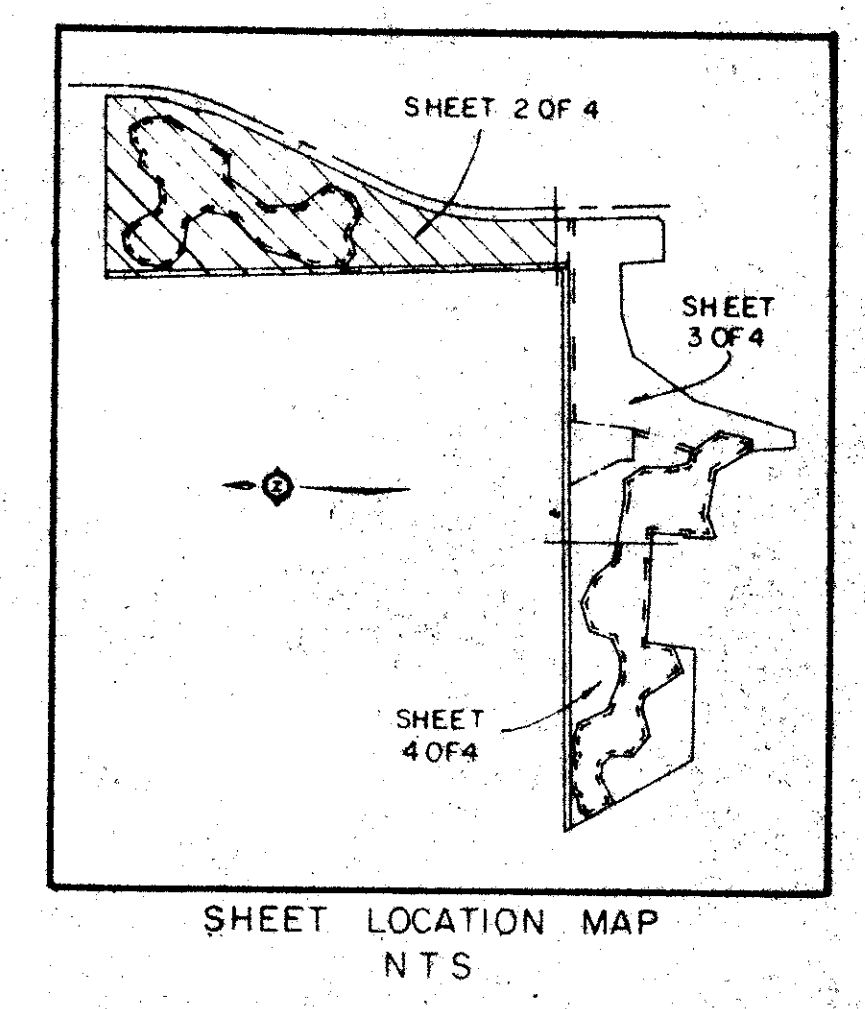
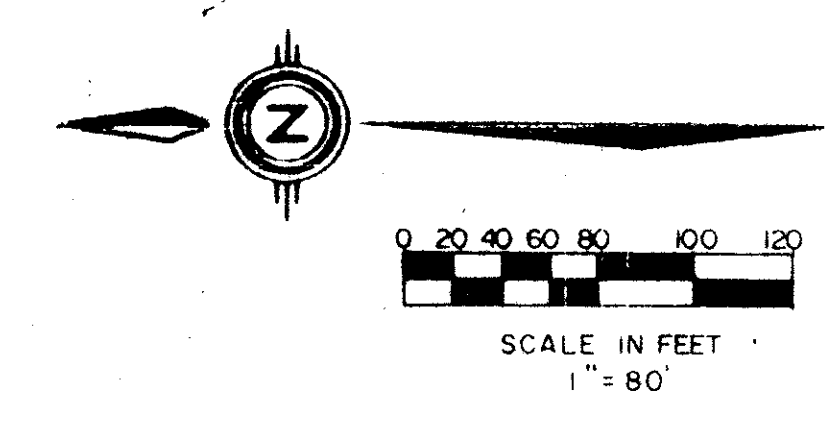
GOLF COURSE, PART OF COVENTRY, A P.U.D.

SITUATE IN SECTION 21, TOWNSHIP 46 SOUTH, RANGE 42 EAST,
PALM BEACH COUNTY, FLORIDA, BEING A REPLAT OF A PORTION
OF GLENEAGLES PLAT ONE, (P.B. 50, P. 63 - 65).

SHEET 2 OF 4

146

STATE OF FLORIDA
COUNTY OF PALM BEACH
THIS PLAT WAS FILED FOR
RECORD AT _____
THIS _____ DAY OF _____
AD. 1984 AND DULY RECORDED
IN PLAT BOOK _____ ON PAGES
_____ AND _____
JOHN B. DUNKLE, CLERK
BY: _____, D.C.



PALM BEACH FARMS PLAT NO 1
(PB 2, PGS 26-28)

0230-301

51/146

Meridian		WEST PALM BEACH, FLORIDA	
Surveying and mapping inc.			
DRAWN	MEH	DATE	1985
CHECKED	RAH	SCALE	1" = 80'
DRAWING NO	84-P-115	GLENEAGLES PLAT THREE SEC. 21, TWP. 46S., RGE. 42E	

DRAWING NUMBER

DRAWING NUMBER

DRAWING NUMBER

PLAN HOLD CORPORATION • IRVINE, CALIFORNIA
RECORD BY NUMBER 07504

PLAN HOLD CORPORATION • IRVINE, CALIFORNIA
RECORD BY NUMBER 07504

PLAN HOLD CORPORATION • IRVINE, CALIFORNIA
RECORD BY NUMBER 07504